

Maritime Tourism & Small Harbours

Merle Ülejõe

NGO Estonian Small Harbour
Development Center



EAST BALTIC COAST

Region

- ESTONIA
- 9 marinas

- LATVIA
- 10 marinas



Interreg
Estonia-Latvia
European Regional Development Fund



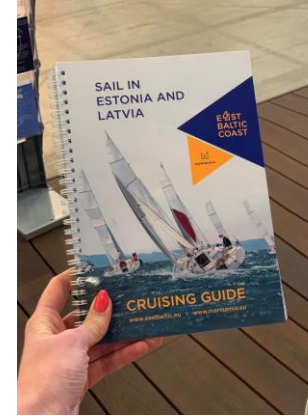
EUROPEAN UNION

What we do?

Ringsu harbour



Small Harbours investments



Information materials



Marketing

- Create standardized and harmonized service levels in harbours
- Connect Latvia and Estonia to international maritime routes
- Promotion and marketing of Latvia and Estonia as sailing destination.

CRUISING GUIDE

(available online as well)

28 📍 LATVIA



6



GULF OF RIGA PORT OF ROJA

CONTACT US

Ostas iela 1, Roja
+371 26434813
rojasosta@apollo.lv
www.rojaport.lv

TOURISM SERVICES AND OFFERS IN THE SURROUNDING AREA

Although Roja is just a small and cosy town, Roja has now become the capital of the summer! A place where people love to spend their free time, enjoy summer holidays, sea breezes, and the generosity of nature.

Here you can dine on excellent meals in local restaurants or try a real fisherman's feast together with the fishermen, go on an exciting boat trip down the Roja River, and explore our coastline history and values in the Roja Sea and Fishing Museum.

29 📍 EAST BALTIC COAST

ACCESS TO THE MARINA FROM THE SEA

Straight entrance from NNW following the leading line (sector light 3°, direction 215°,0-35°,0). Follow the green buoy No. 385 and keep with the river to the marina. Depth at guest piers – 3.5 m. Good protection from all wind directions. Current of the river is insignificant, except for springtime floods. Tides are insignificant, may differ by 0.3 m above or below the mean.

57°30'38.1" N
22°48'44.2" E

Depth: 3.5 m
Max. LOA: 15 m
Max. width: 3 m
Number of berths: 40



Depths and heights measured in metres, in reference to mean sea level (MSL-77).



PÄRNU AND SOUTH-WEST ESTONIA

TOURIST INFORMATION

About Pärnu:
www.visitparnu.com

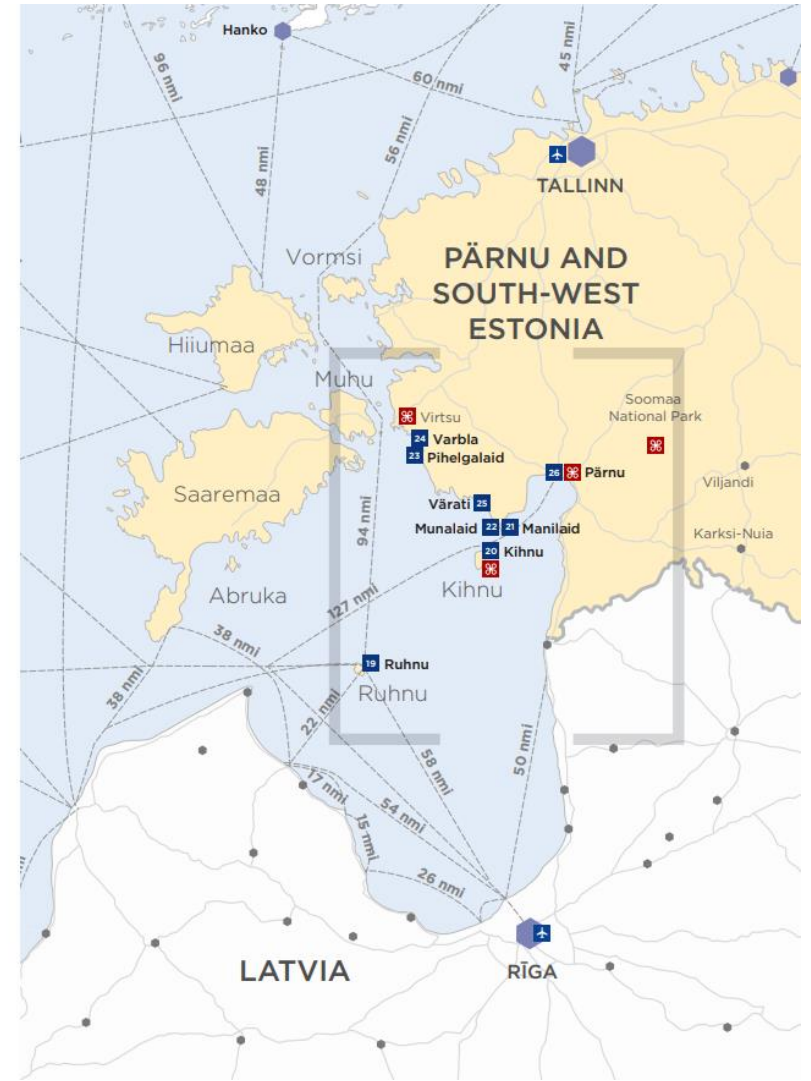
About Kihnu:
<https://kihnu.kovtp.ee>



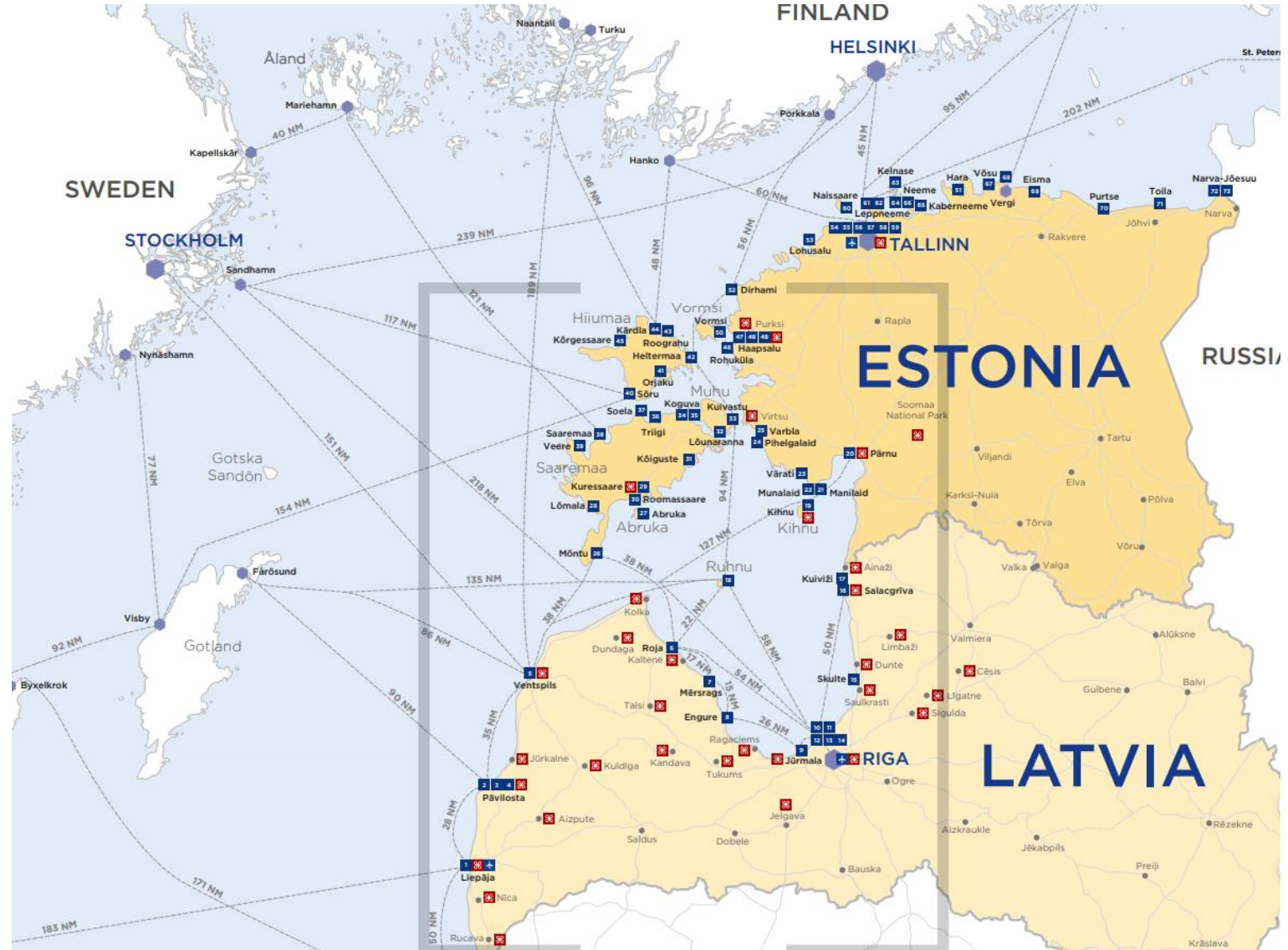
Pärnu is the summer capital of Estonia. Pärnu is famous for its sandy beaches, lovely atmosphere and numerous festivals. In the centre of Pärnu you can explore many lovely parks, examine diverse architecture from the medieval period to nowadays, or enjoy one of the many spas. We recommend to travel outside of Pärnu to see pine forests, natural sand beaches, bogs, fishing villages, manor complexes, museums, and wildlife. Don't forget to sail to Vormsi and Manija islands to see the ethnic culture and lifestyle of the locals!

PLACES TO VISIT

- Pärnu beach promenade – take a long walk along the beach and enjoy a good meal in one of the beach cafes
- Pärnu Vallikäär – a romantic promenade with a marine-themed playground
- Pärnu Maarja-Magdaleena Guild – visit different handicraft workshops
- Kihnu Museum – the cultural space of Kihnu, which has been included in the UNESCO's list of Masterpieces of Oral and Intangible Heritage of Humanity



Connect Latvia and Estonia to international maritime routes



Fairs



Helsinki 2019

Düsseldorf 2019

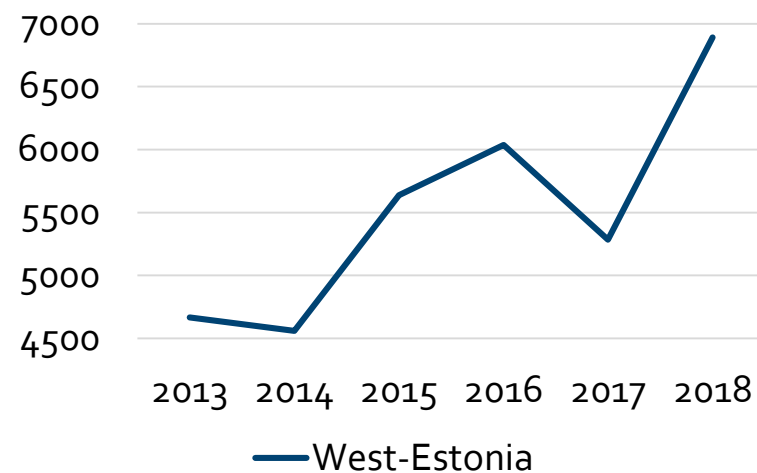


Stockholm 2019

How's the sector?

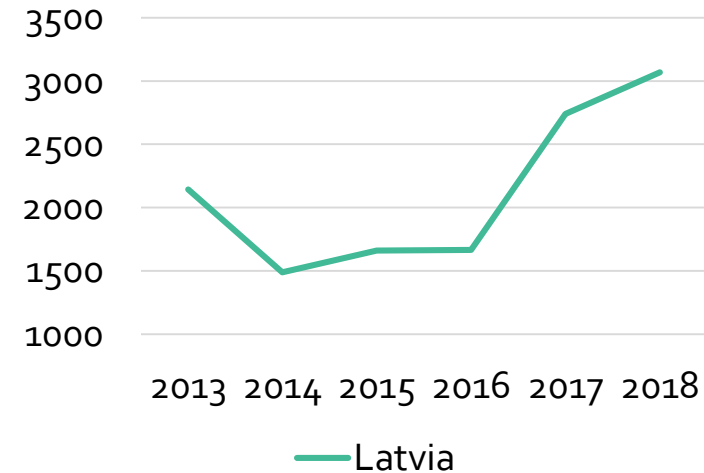
ESTONIA

Visiting yachts statistics



LATVIA

Visiting yachts statistics



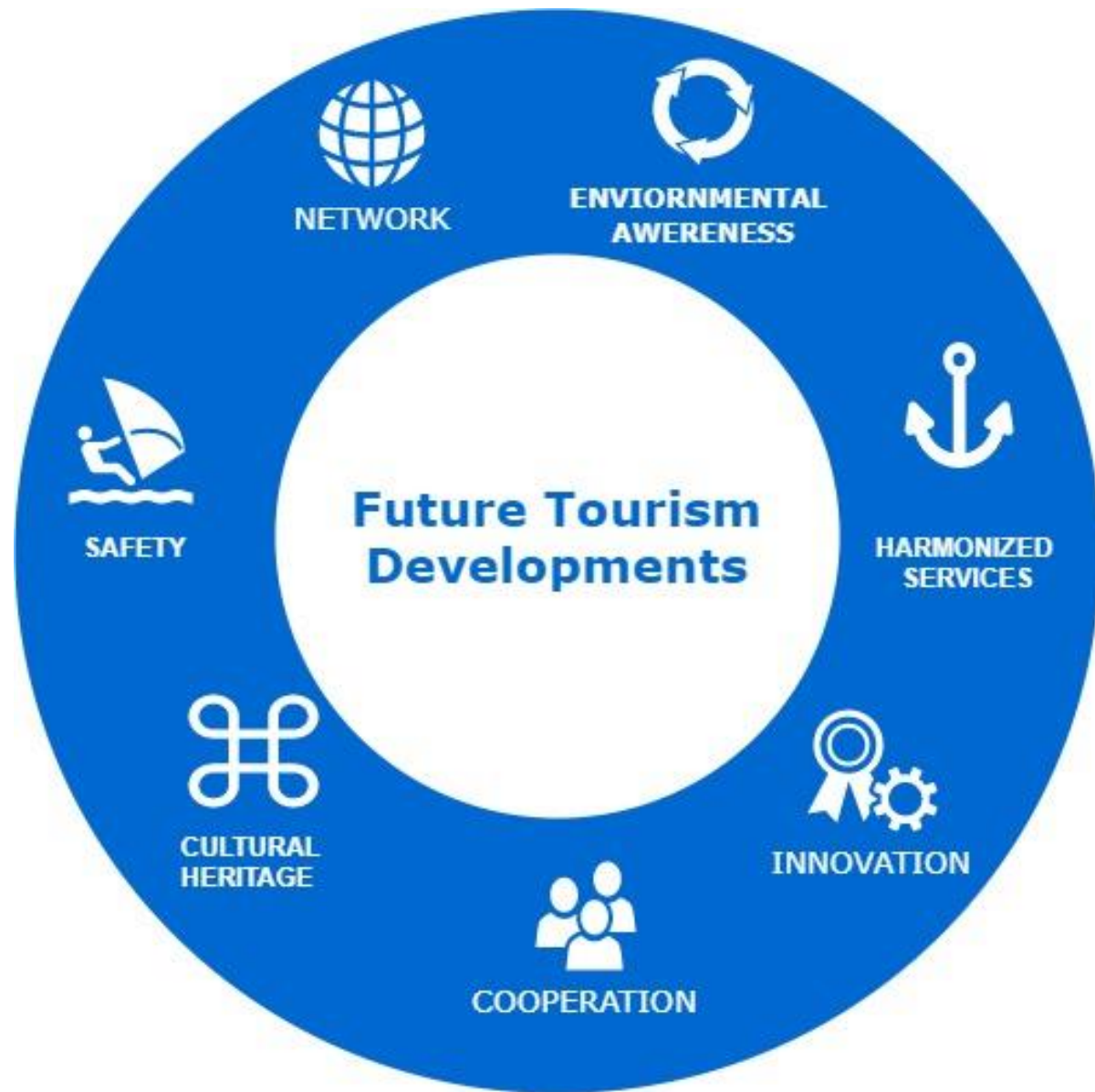
Total by 2018

9960

Aim in 2022

15 000

Future Sector prospects





Thank you

merle@bf.ee



EastBalticCoast

Homepage: <http://eastbaltic.eu/>

Tallinn